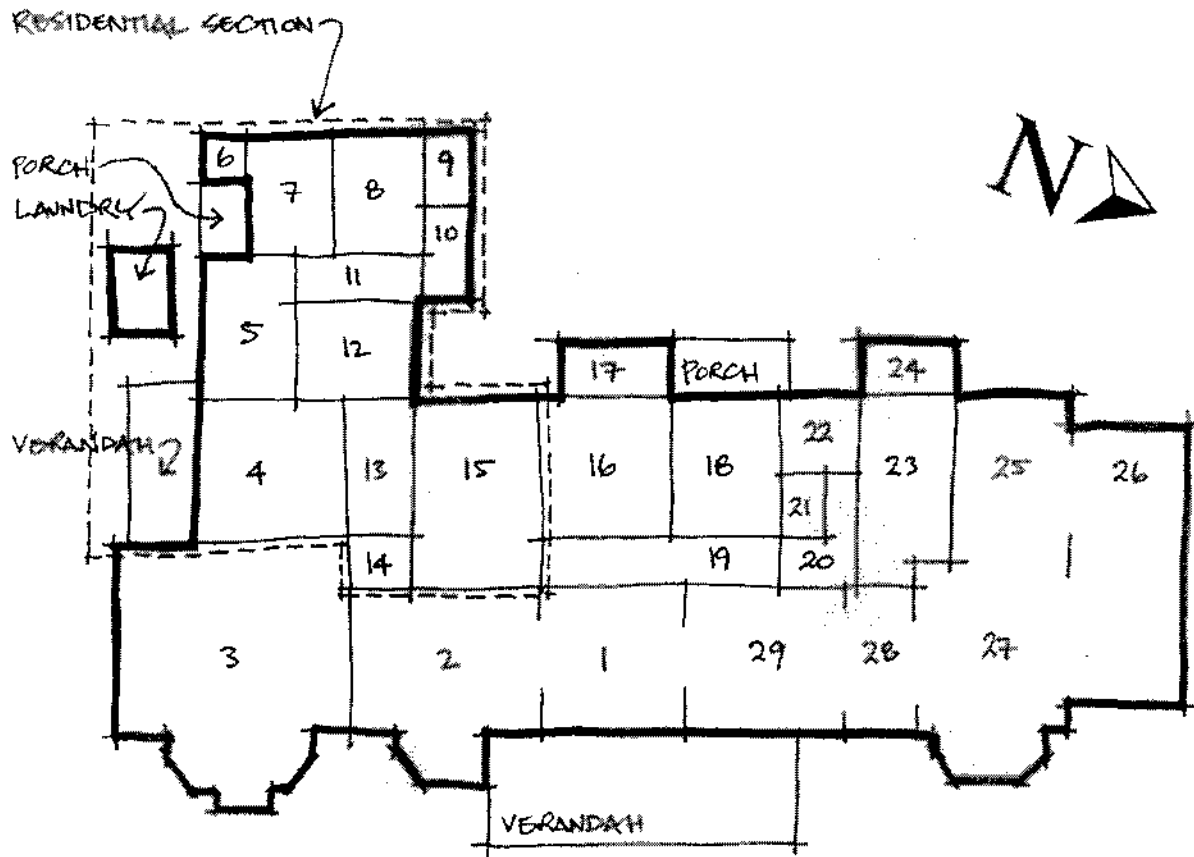


**Figure 1. Schematic plan of Cuppacumbalong homestead**  
 Not to scale

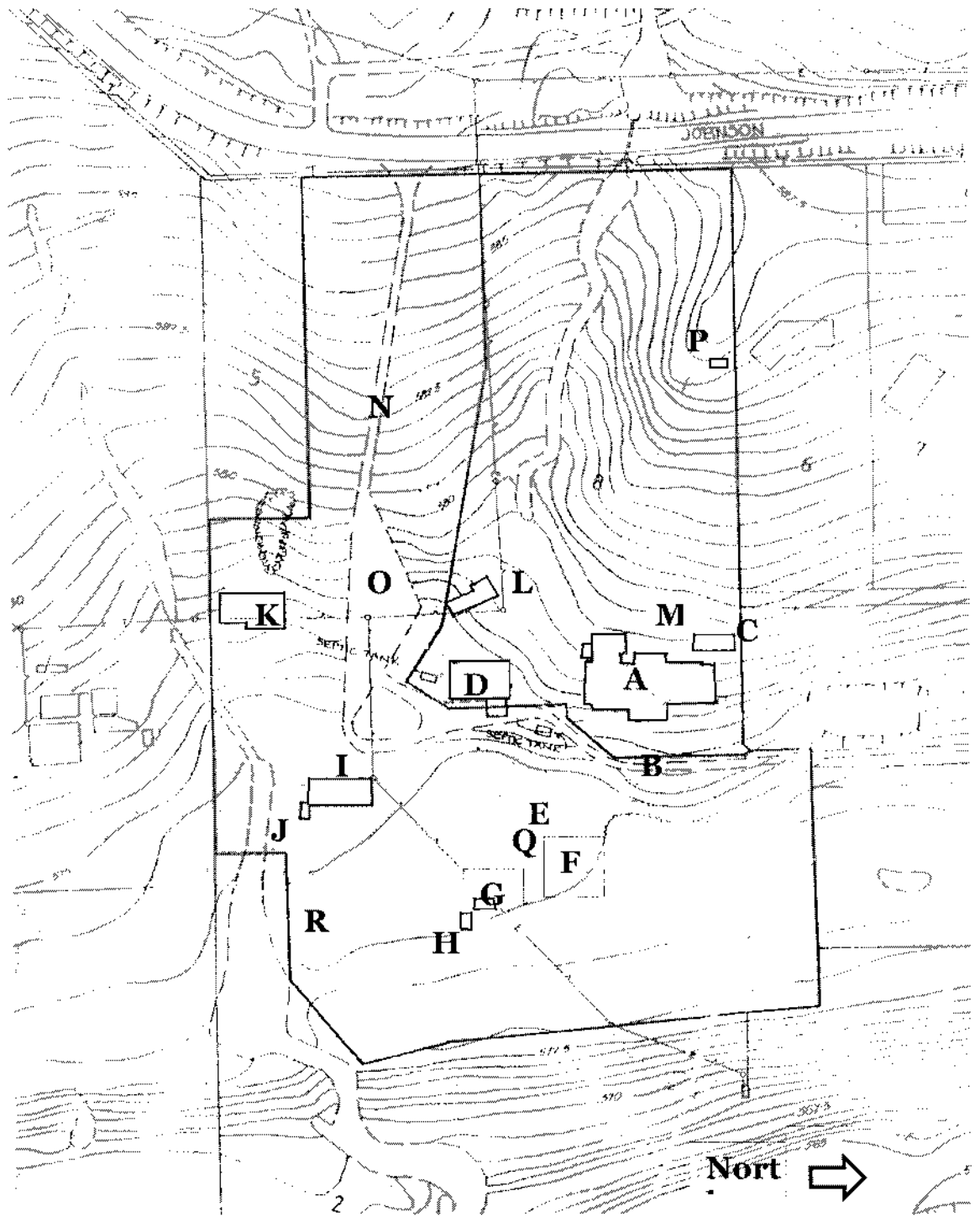


**Legend**

- |                               |                     |
|-------------------------------|---------------------|
| 1. Entry hall                 | 16. Store           |
| 2. Bar and lounge             | 17. Office          |
| 3. Lounge                     | 18. Store           |
| 4. Kitchen                    | 19. Hall            |
| 5. Store                      | 20. Hall            |
| 6. Cupboard                   | 21. Bathroom        |
| 7. Bedroom                    | 22. Bathroom        |
| 8. Bedroom                    | 23. Kitchen         |
| 9. Hot water service cupboard | 24. Pantry          |
| 10. Bathroom                  | 25. Restaurant/cafe |
| 11. Hall                      | 26. Restaurant/cafe |
| 12. Siting                    | 27. Restaurant/cafe |
| 13. Hall                      | 28. Restaurant/café |
| 14. Walk in robe              | 29. Restaurant/cafe |
| 15. Lounge                    |                     |

**Figure 2. Cuppacumbalong site plan**

Not to scale



**Legend**

- |   |                           |   |                               |
|---|---------------------------|---|-------------------------------|
| A | Homestead                 | J | Meat Shed 2                   |
| B | Main Garden               | K | Stables                       |
| C | Toilet Block              | L | Pottery Studio                |
| D | Cottage Gallery           | M | Shed (outline not shown)      |
| E | Tennis Court              | N | Driveways                     |
| F | Area of former homesteads | O | Carpark                       |
| G | Meat Shed 1               | P | Concrete Piers (remnant tank) |

|   |                |   |  |
|---|----------------|---|--|
| H | Garden Shed    | Q | stand)<br>Footings of first and second<br>homesteads |
| I | Machinery Shed | R | Area of household refuse dump                        |