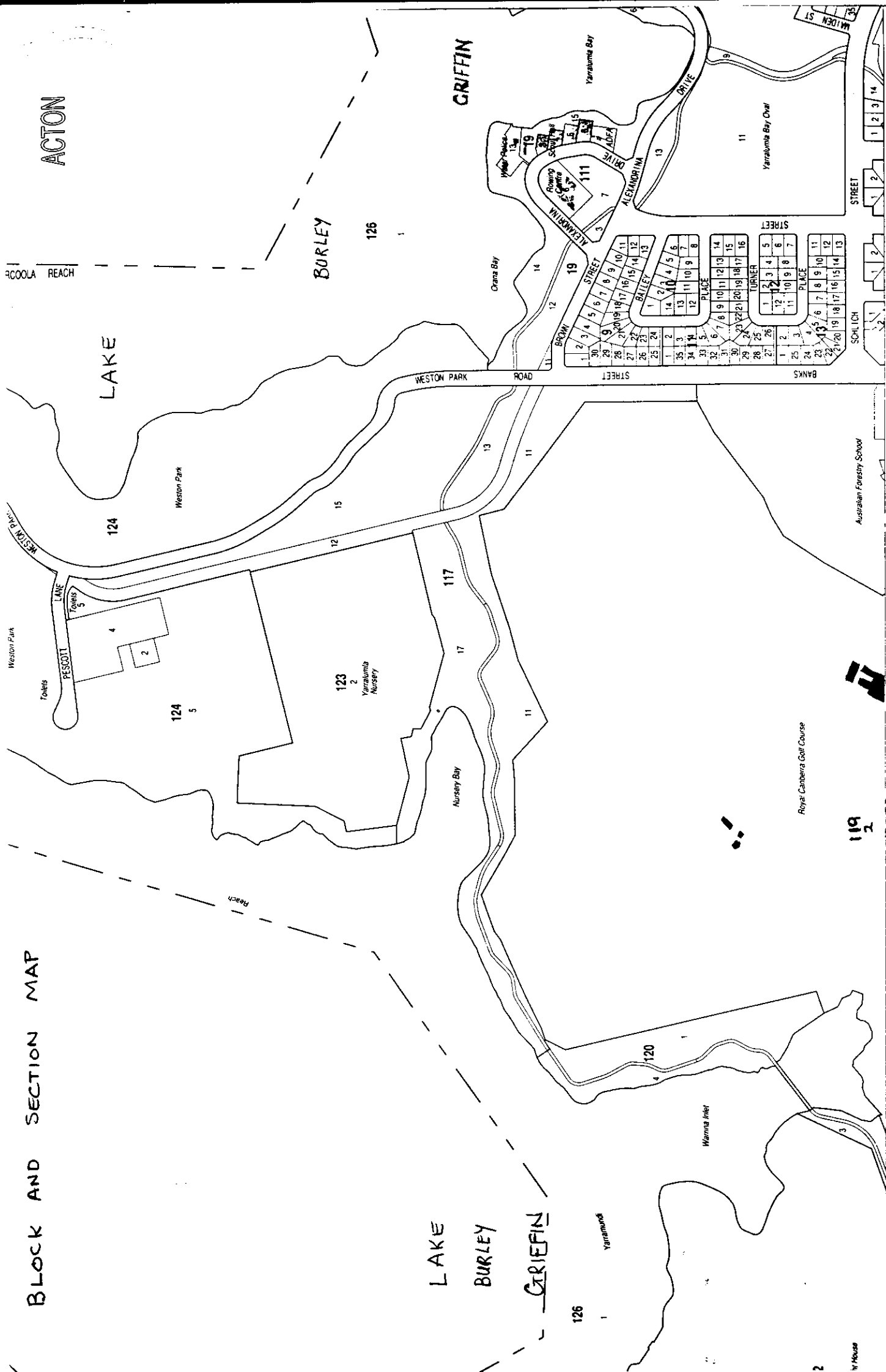
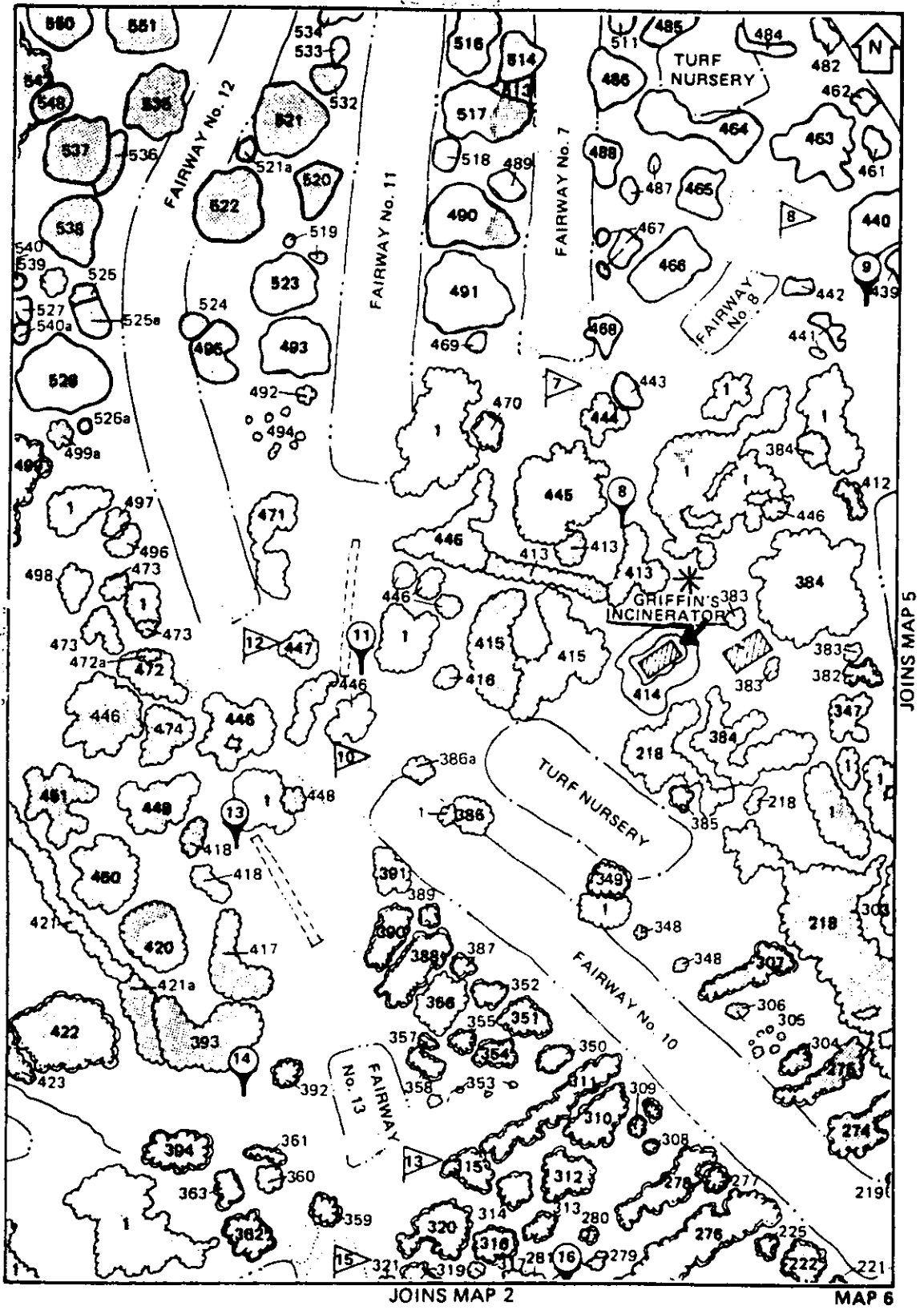


BLOCK AND SECTION MAP

ACTON
BURLEY
LAKE
GRIFFIN

ACCOOLA REACH

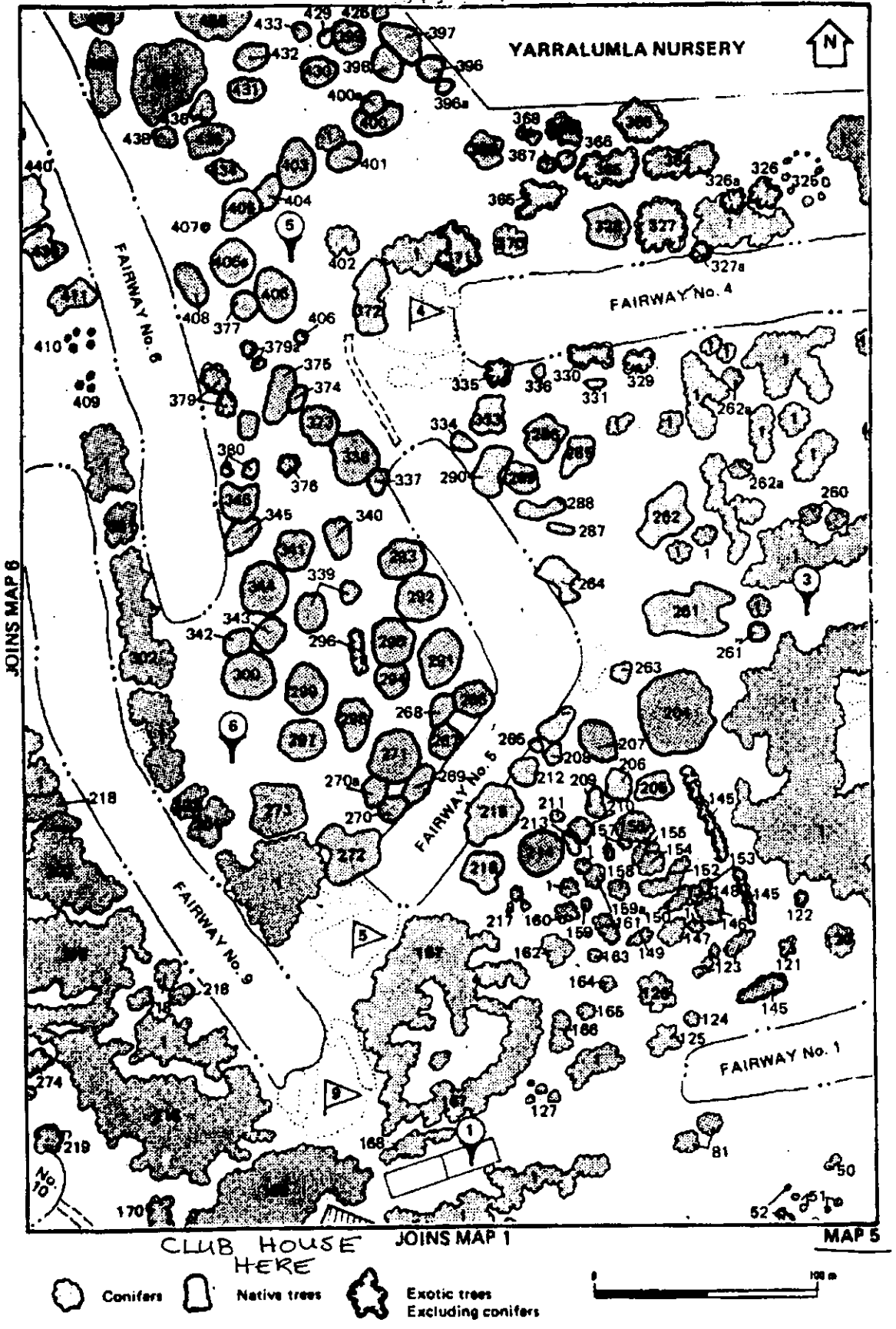




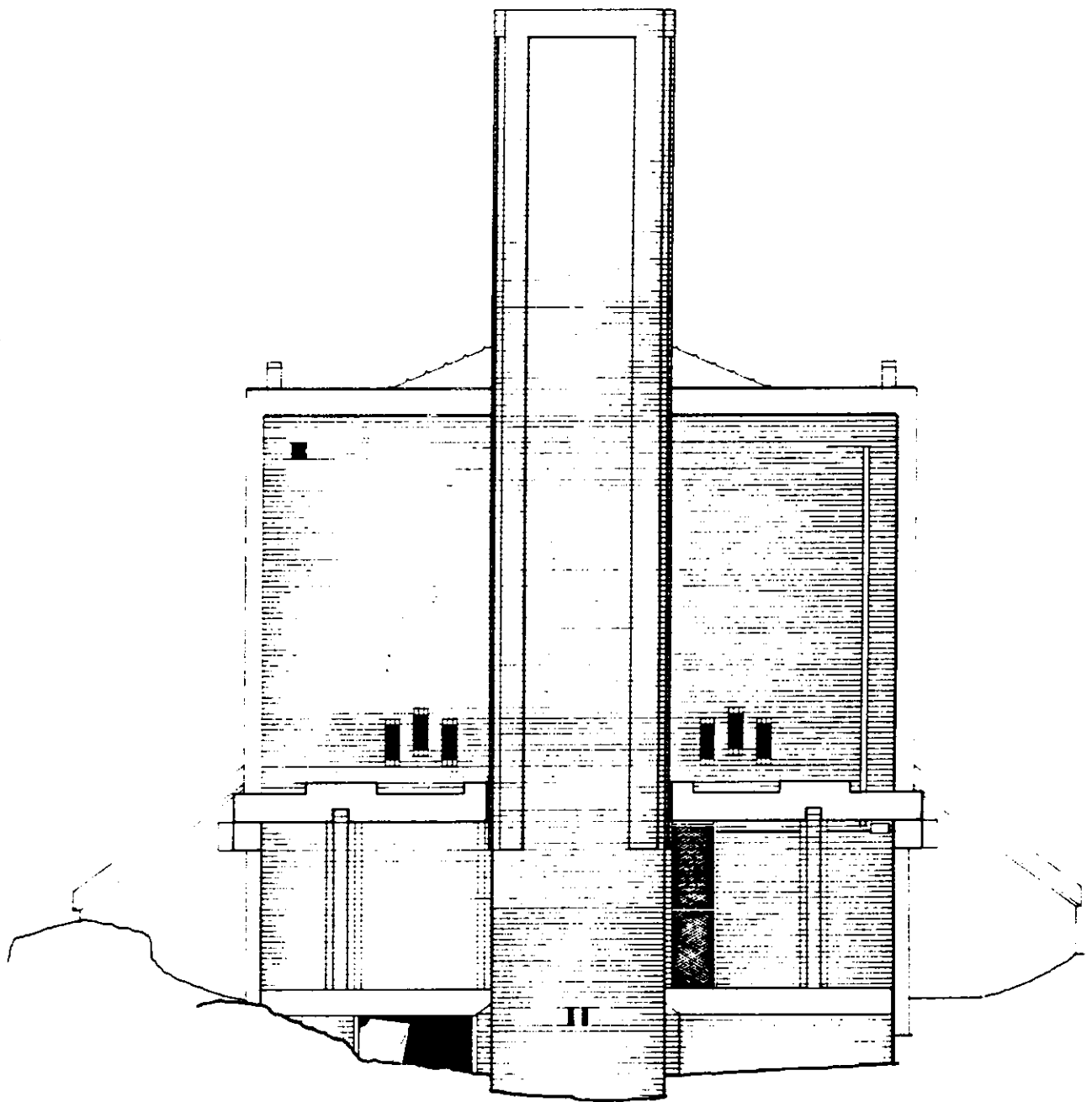
- Conifers
- Native trees
- Exotic trees
Excluding conifers

Map showing location of incinerator in Westbourne Woods in relation to golf course (numbers refer to tree species)

From maps prepared by MM Richardson & J. Doyle 1980 for a Report by AF Rout, Division of Forest Research, CSIRO, Canberra.



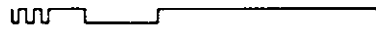
Map showing location of Royal Canberra Golf Club Club house in relation to Golf Course - joins map 6 showing location of incinerator in Westbourne Woods. From maps prepared by MM Richardson and J. Doyle for a Report by A F Rout, Division of Forest Research, CSIRO, C



SW ELEVATION

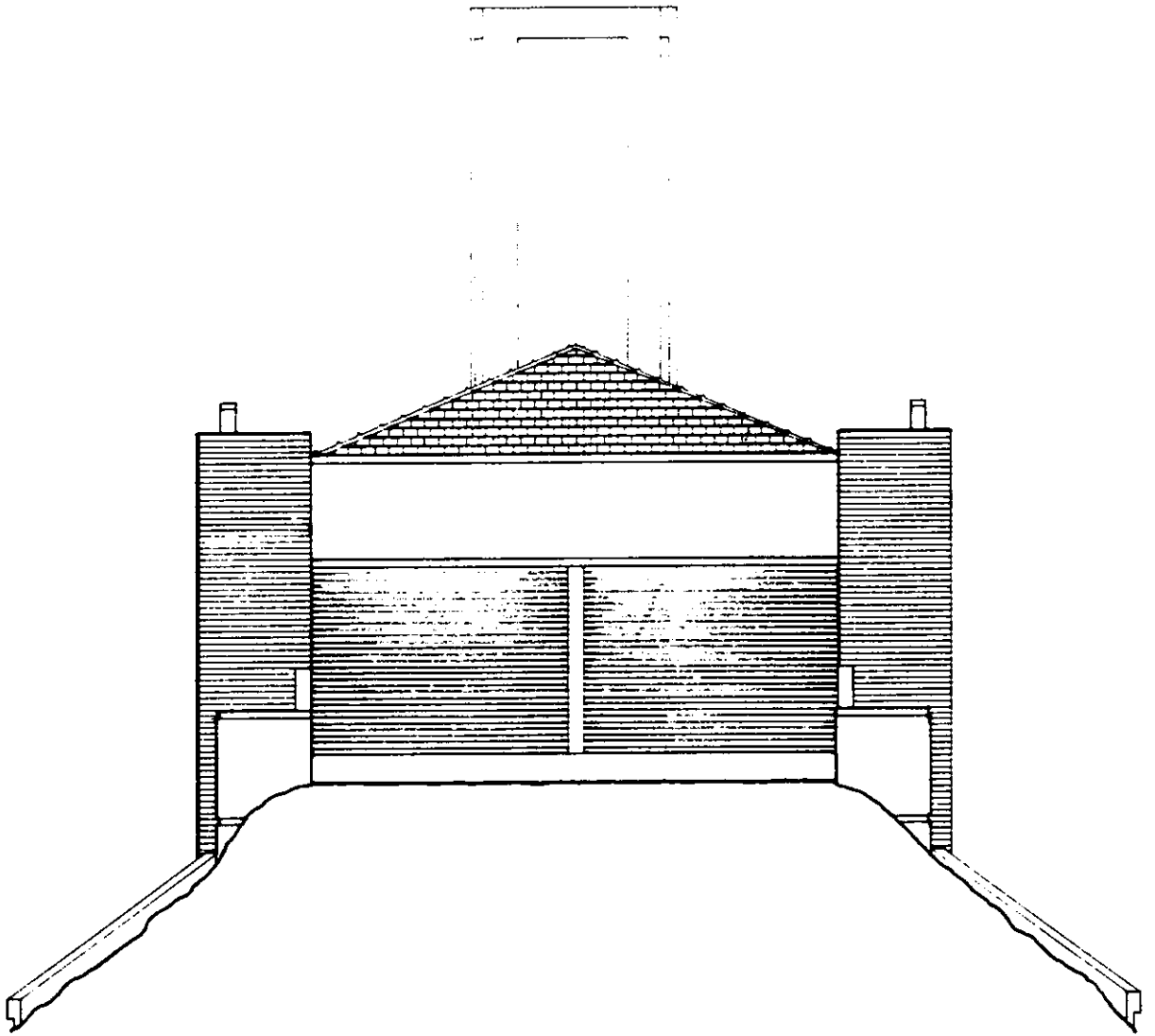
YARRALUMLA
INCINERATOR

SCALE 1:50



MARION MAHONY GRIPPIN MEASURED DRAWING
CONDUCTED BY ROYAL AUSTRALIAN INSTITUTE OF ARCHITECTS (A.C.T. CHAPTER) FOR A.C.
SPONSORED BY AN HERITAGE GRANT FROM THE DEPARTMENT OF TOURISM

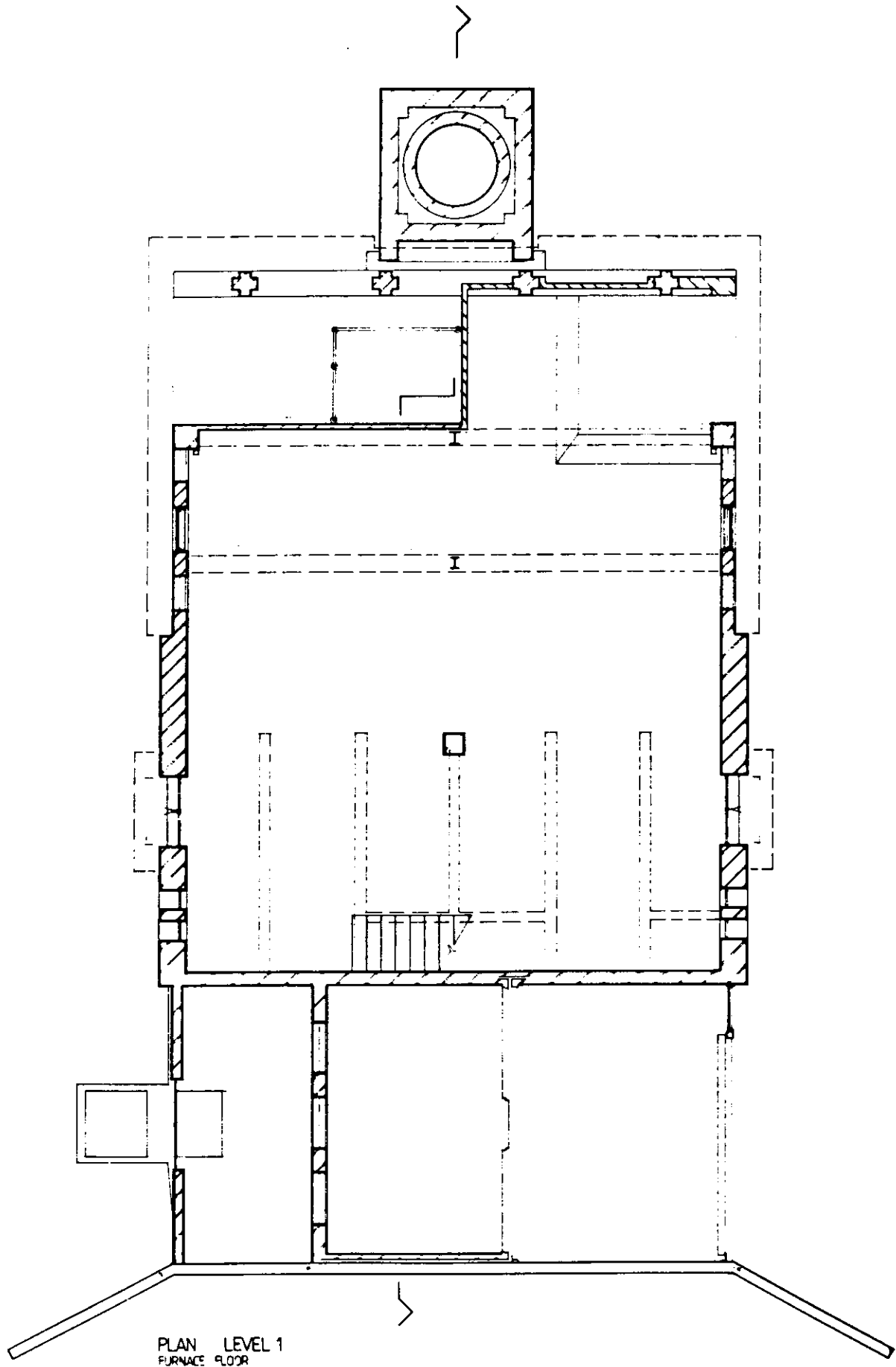
1987



NE ELEVATION

Marion Mahony Griffin Measured Drawing
Competition 1987

YARRALUMLA INCINERATOR
RECEIPT NO. 4

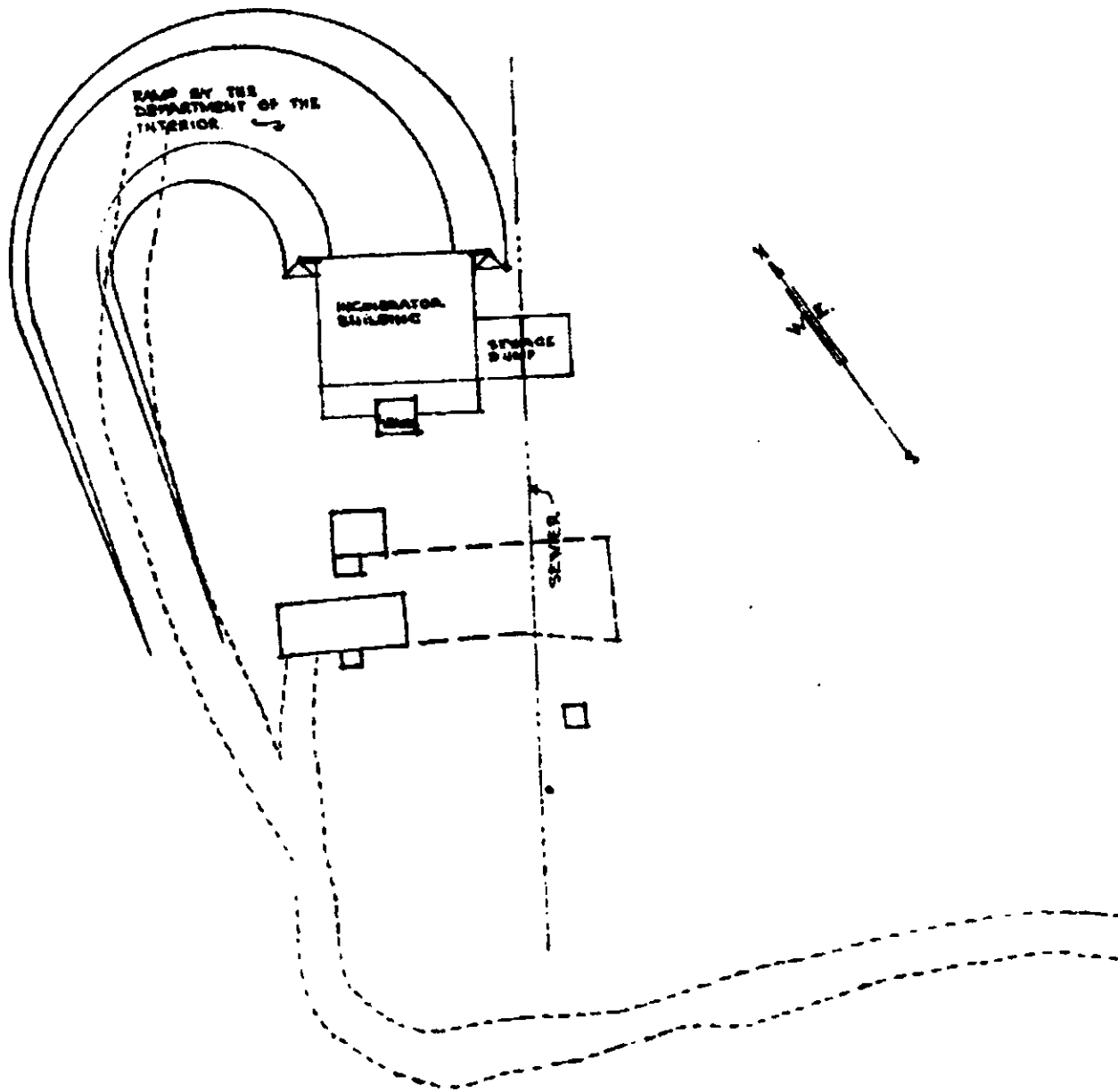


PLAN LEVEL 1
FURNACE FLOOR

YARRALUMLA INCINERATOR
RECEIPT NO 4

Marion Mahony Griffin Measured
Drawing Competition 1987

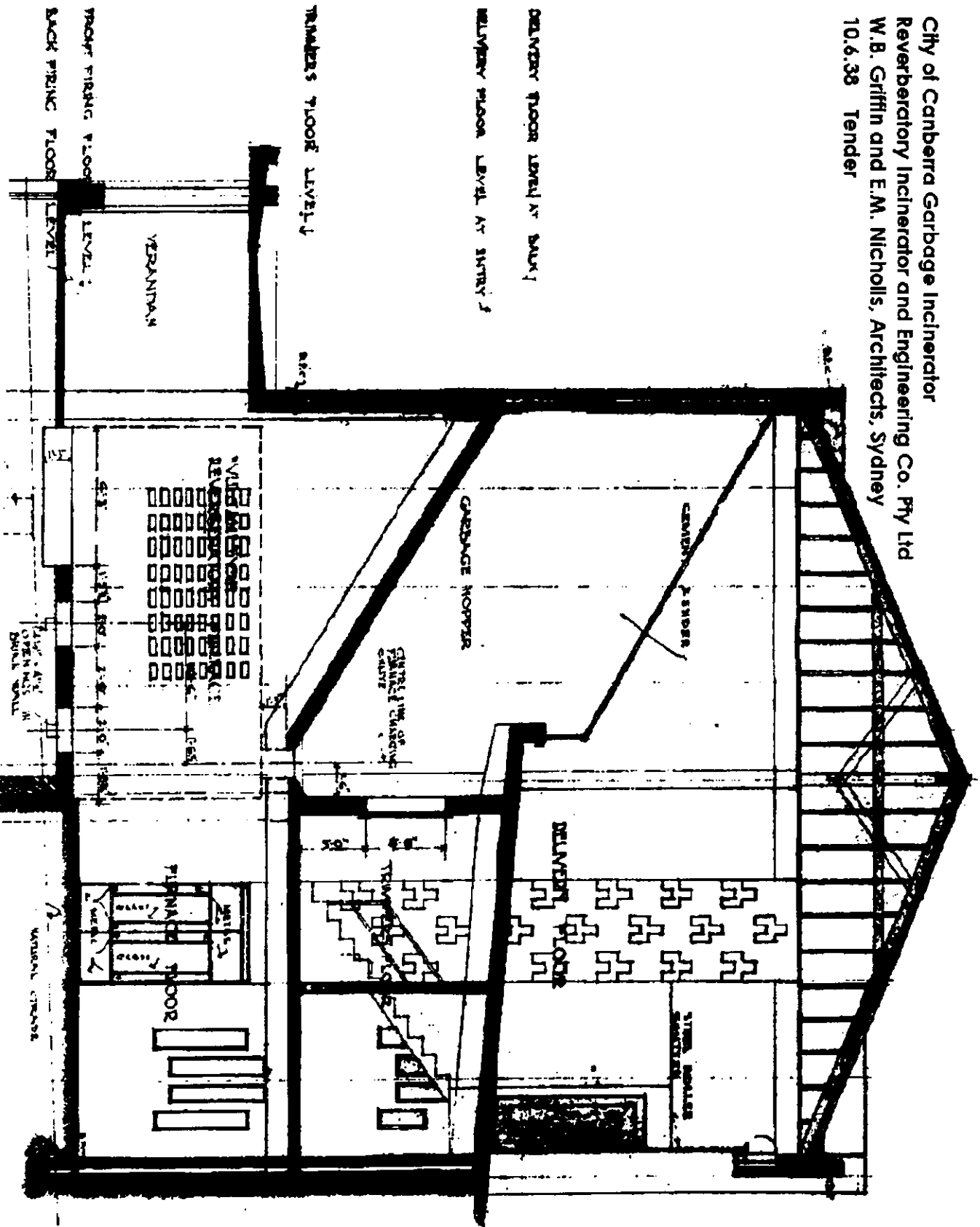


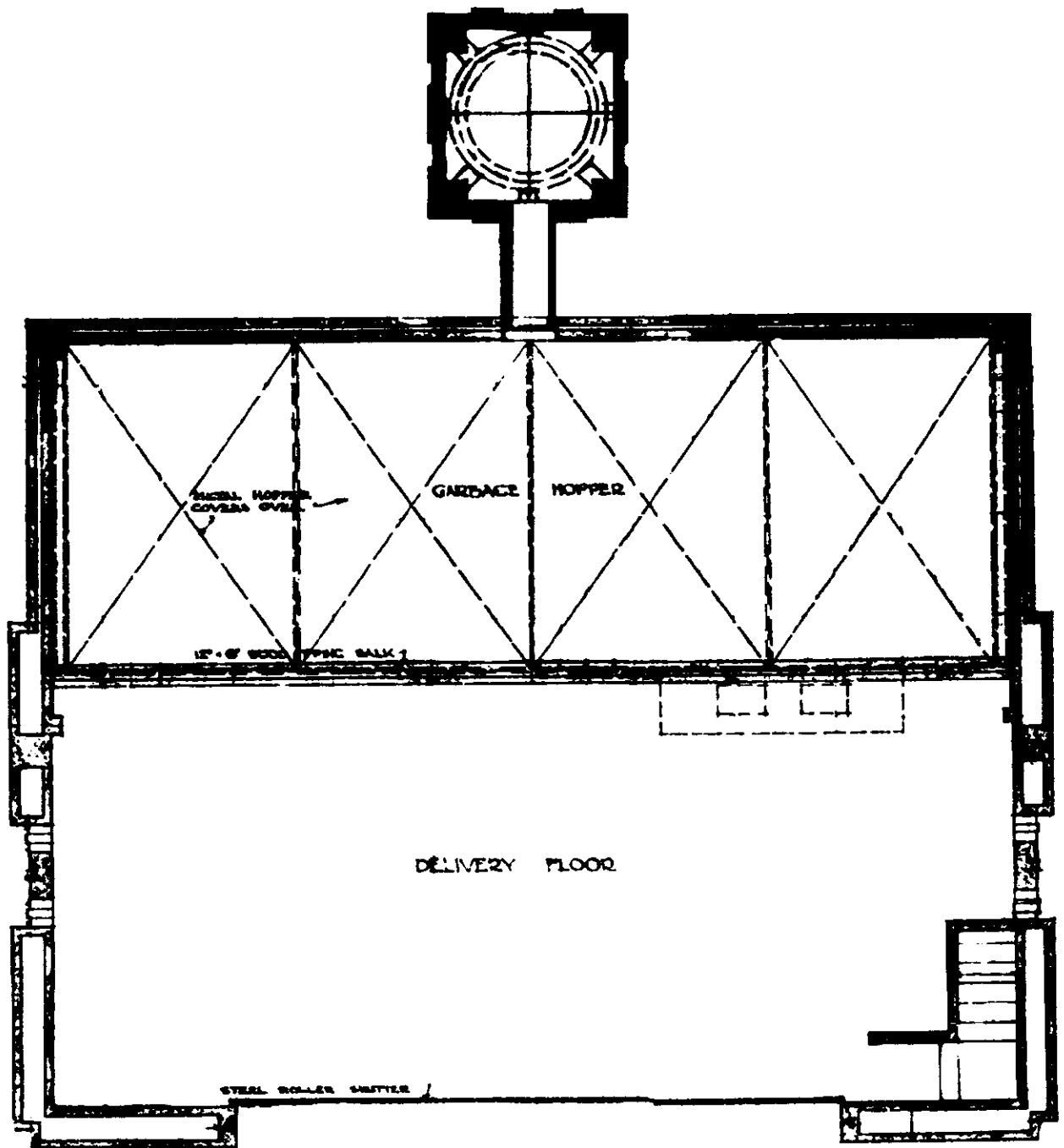


BLOCK PLAN
1" = 40'-0".

CITY OF CANBERRA	SHEET 3
GARBAGE INCINERATOR	(3 SHEETS)
REVERBERATORY INCINERATOR	1" = 1'-0"
ENG. C. P. LTD. SYDNEY.	10. 6. 38
V. GRIFFIN & E. M. NICCOLLS	REVISIONS.
ARCHITECTS SYDNEY.	

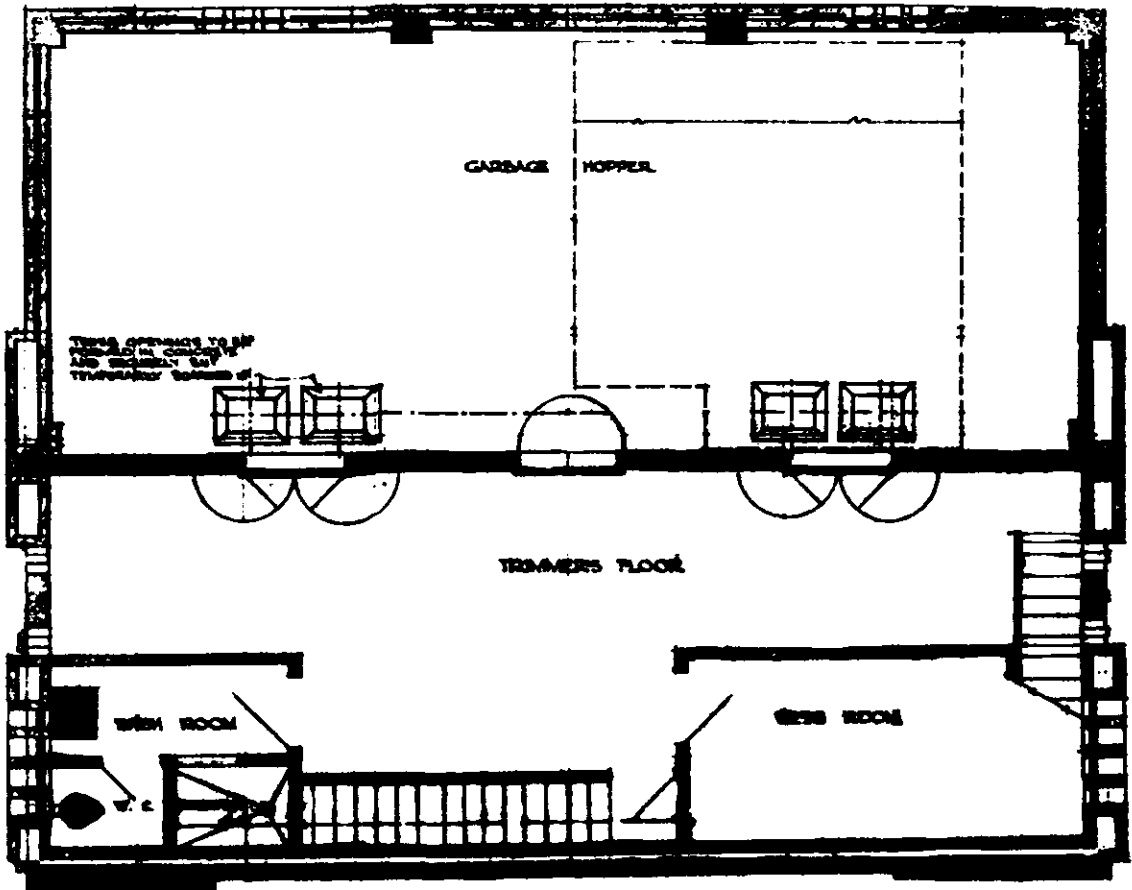
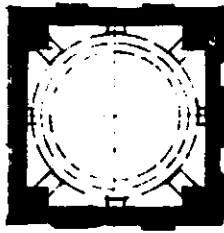
City of Canberra Garbage Incinerator
 Reverberatory Incinerator and Engineering Co. Pty Ltd
 W.B. Griffin and E.M. Nicholls, Architects, Sydney
 10.6.38 Tender





DELIVERY FLOOR PLAN.

City of Canberra Garbage Incinerator
 Reverberatory Incinerator and Engineering Co. Pty Ltd
 W.B. Griffin and E.M. Nicholls, Architects, Sydney
 10.6.38 Tender



TRAMMERS FLOOR PLAN

THESE DRAWINGS ARE SUBJECT TO THE
ACCOMPANYING STRUCTURAL ENGINEER'S REMARKS

CITY OF CANBERRA GARBAGE INCINERATOR REGENERATORY INCINERATOR P.O. BOX 110 SYDNEY WILKINSON & WICKHOLLS ARCHITECTS SYDNEY	SHEET 3 (3 OF 4) K-10 19-6-58 REVISIONS
------------------------------------------------------------------------------------------------------------------------------------------------	-----------------------------------------------------