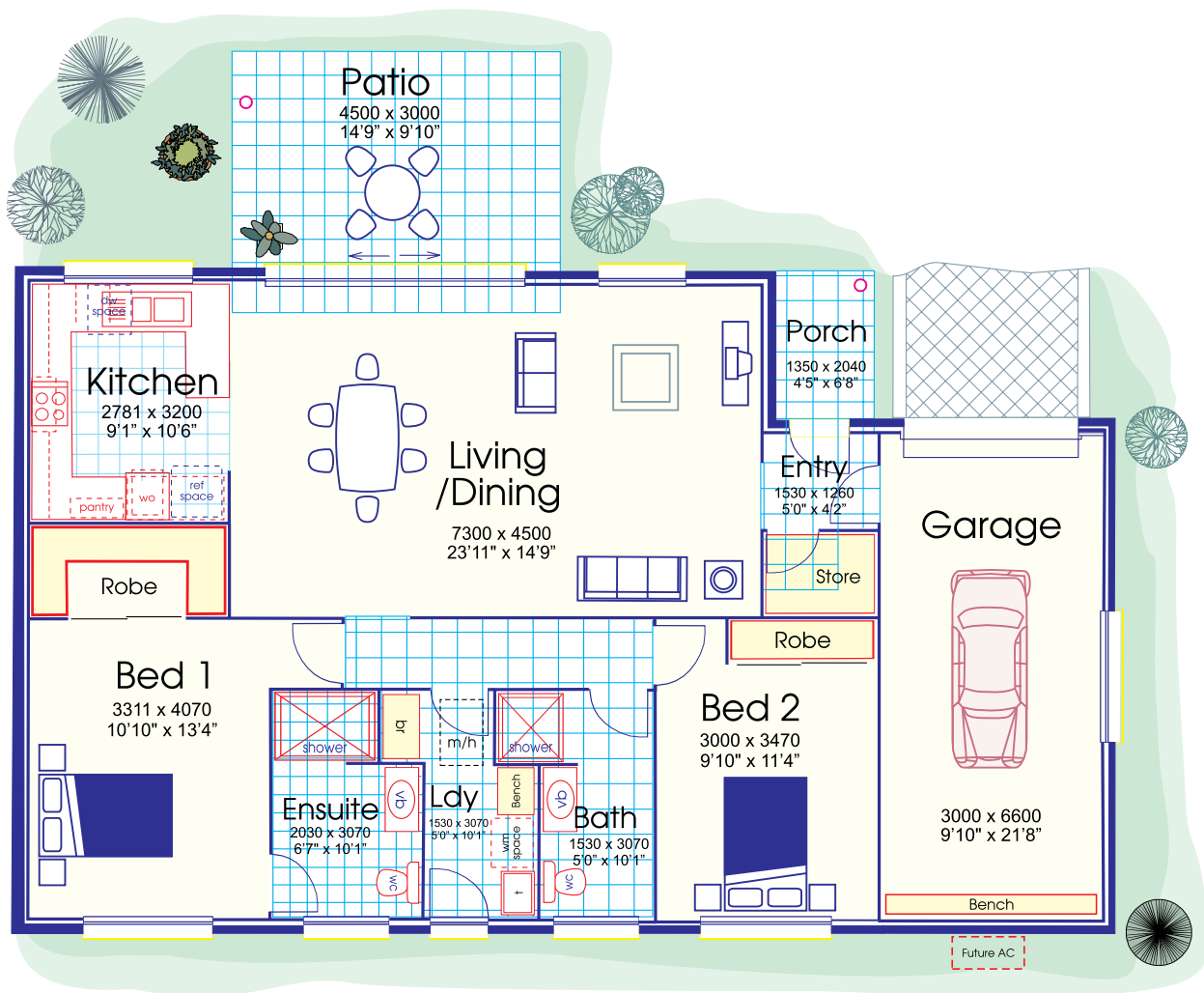


Villa 97 - The Pandora

- Two Bedrooms • Lockup Garage
 - Ensuite & Bathroom • Independent Living Villa
- Floor Area 144.02m² (15.49sq)



Villa 97 - The Pandora

- Two Bedrooms • Lockup Garage
 - Ensuite & Bathroom • Independent Living Villa
- Floor Area 144.02m² (15.49sq)

Bedroom 1

- Variable speed ceiling fan
- Built-in robe, shelves
- Superior quality carpet
- Telephone point
- Television point and power points

Ensuite

- Vanity unit and basin
- Shower with quality flexible hand set
- Powder coated shower screen
- Wall mounted mirror
- Quality mixer taps
- Exhaust fan and heater light
- Power point
- WC
- Support rails

Bedroom 2 / Study

- Ceiling fan
- Built-in robe, shelf
- Superior quality carpet
- Power points and telephone point

Bathroom

- Vanity unit and basin
- Shower with quality flexible hand set
- Powder coated shower screen
- Wall mounted mirror
- Quality mixer taps
- Exhaust fan and heater light
- Power point
- WC
- Support rails

Living / Dining

- Variable speed ceiling fan
- Superior quality carpet
- Telephone point
- Television point

Patio and Porch

- Ceramic floor tiles to porch
- Ceramic floor tiles to patio
- Ceiling lights
- Weatherproof power point

Kitchen

- Stone benchtop reconstituted
- Stainless one & half bowl steel sink with quality mixer tap
- Pantry cupboard, many drawers
- Dishwasher drawer
- Quality wall oven and hot plates
- Quality floor tiles
- Down light over sink area
- Exhaust fan
- Telephone point and power points

Laundry

- Stainless steel wash tub
- Bench and cupboards
- Ceramic floor tiles & tiles to splashback

Garage

- Lock up panel lift door with remote control and internal access
- Power point
- Fluorescent light
- Garage coated floor

Site Landscaping

- Intensive landscaping
- Fold-down clothes line
- Hose tap

General Items

- Emergency call system button
- All walls & ceilings with quality paint
- High ceilings
- Sliding powder coated aluminium windows
- Doors, architraves and skirting with gloss enamel paint finish
- All windows key locked
- Quality internal doors
- Smoke detector-mains plus battery back-up
- Wired & plumbed for air conditioning
- Security screens excluding front & side door(s)
- Front door with glass infill
- Gas hot water service
- 3000 litre rain water tank

Store / Linen

